

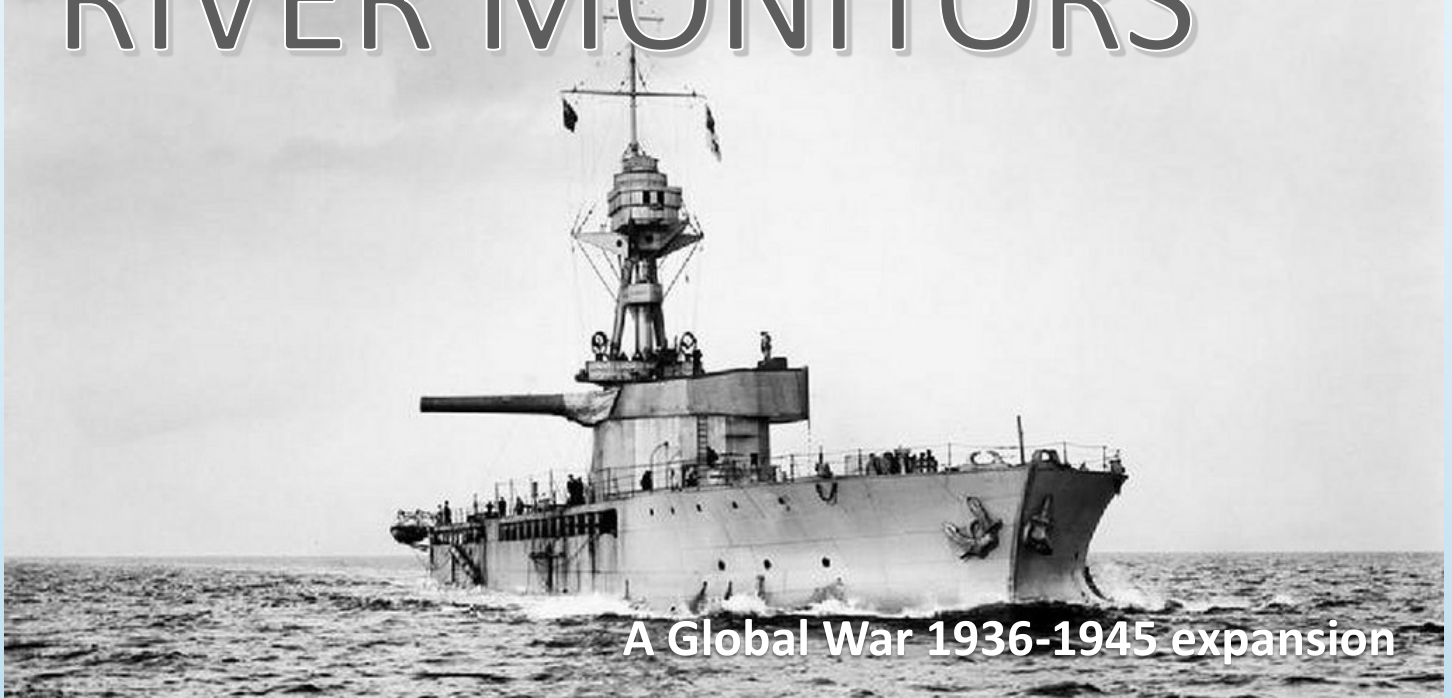
# RIVER MONITORS

A GLOBAL WAR EXPANSION SET





# RIVER MONITORS



A Global War 1936-1945 expansion



## INTRODUCTION

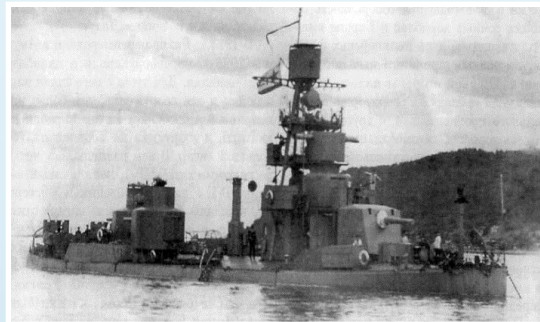
Welcome to Historical Board Gaming's RIVER MONITORS (MON) expansion for Global War 1936-1945. In this set we cover rules for both River Patrol Boats and Monitors. In this set you will get more of the patrol boat markers first featured in our Manchukuo expansion as well as a 3D printed Erebus class monitor.

<p><b>EREBUS</b> (1916) — Marina Britannica Monitore</p> <p>Alle classi "Erebus" appartengono anche il monitor "Horn" (Holland &amp; Wolf, 1916-1918-1919-1921) Da notare, la sezione trasversa</p>		<table border="0"> <tr> <td>Costruttore</td> <td>Holland &amp; Wolf, Green</td> </tr> <tr> <td>Impianto</td> <td>1916-1918</td> </tr> <tr> <td>Dislocamento</td> <td>Nominale: 8.000 t</td> </tr> <tr> <td>Dimensioni</td> <td>                 Lunghezza tra esp. 173,8 m                  Lunghezza 173,8 m                  Larghezza 26,3 m                  Antirullo 3,3 m             </td> </tr> <tr> <td>Apparato motore</td> <td>                 4 cilindri, 300 cv                  2 turbine a vapore                  2 turbine a gas                  2 turbine a gas                  2 turbine a gas                  2 turbine a gas                  2 turbine a gas                  Autonomia: 1.500 miglia             </td> </tr> <tr> <td>Armamento</td> <td>                 3-281/42; 8-100/50; 3-76/45 a.a.; 2-40 a.a.                  Spese: 2.274 a. i.             </td> </tr> <tr> <td>Protezione</td> <td>                 Verticale: poggiamuro 102 mm                  Orizzontale: 102 mm                  Angolare: 50,2 mm             </td> </tr> <tr> <td>Equipaggio</td> <td>288 uomini</td> </tr> </table>	Costruttore	Holland & Wolf, Green	Impianto	1916-1918	Dislocamento	Nominale: 8.000 t	Dimensioni	Lunghezza tra esp. 173,8 m Lunghezza 173,8 m Larghezza 26,3 m Antirullo 3,3 m	Apparato motore	4 cilindri, 300 cv 2 turbine a vapore 2 turbine a gas 2 turbine a gas 2 turbine a gas 2 turbine a gas 2 turbine a gas Autonomia: 1.500 miglia	Armamento	3-281/42; 8-100/50; 3-76/45 a.a.; 2-40 a.a. Spese: 2.274 a. i.	Protezione	Verticale: poggiamuro 102 mm Orizzontale: 102 mm Angolare: 50,2 mm	Equipaggio	288 uomini
Costruttore	Holland & Wolf, Green																	
Impianto	1916-1918																	
Dislocamento	Nominale: 8.000 t																	
Dimensioni	Lunghezza tra esp. 173,8 m Lunghezza 173,8 m Larghezza 26,3 m Antirullo 3,3 m																	
Apparato motore	4 cilindri, 300 cv 2 turbine a vapore 2 turbine a gas 2 turbine a gas 2 turbine a gas 2 turbine a gas 2 turbine a gas Autonomia: 1.500 miglia																	
Armamento	3-281/42; 8-100/50; 3-76/45 a.a.; 2-40 a.a. Spese: 2.274 a. i.																	
Protezione	Verticale: poggiamuro 102 mm Orizzontale: 102 mm Angolare: 50,2 mm																	
Equipaggio	288 uomini																	



## SET CONTENTS

- Monitor Marker x1
- Patrol Boat Marker x6
- 3d Printed Monitor x1



## I.O MONITORS

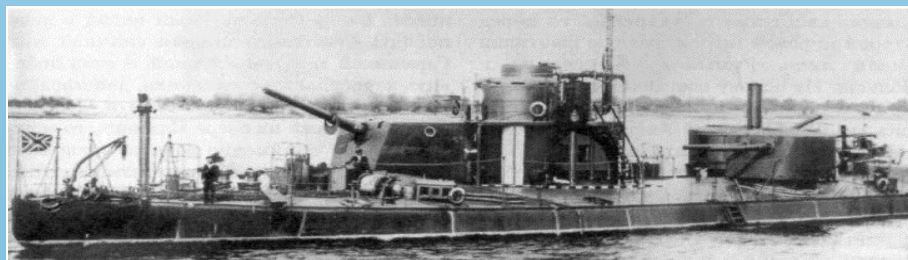


**Monitors** were a class of warship developed during the later part of the 1800s and improved during the early 20<sup>th</sup> century. The general characteristics of these later monitors were that they were smaller, shallow-draft vessels designed to operate inshore but equipped with outsized guns and heavy armor. Their shallow drafts allowed them to operate in littoral zones and river mouths and their large guns were often used to support troops on shore. A few of these monitors were still in service during World War II.

Unit	Attack	Defense	Move	Cost
Monitor	5, SB 3	3	1	Cannot be built

**Shore Bombardment:** The Monitor has a Shore bombardment of “3”

**River Use:** A Monitor may move along rivers in Friendly-owned land zones and is treated as if it were a river boat with the following exceptions; (a) A monitor that combat-moves into an enemy land zone with other Friendly land units may use its shore-bombardment attack on the first round of combat and can be eliminated as a casualty (b) when in combat with other river boats the Monitor Attacks and Defends on an 8. Use the Monitor acrylic when the Monitor enters a river to save space on the board.







## 2.0 RIVER PATROL BOATS

**2.1 Patrol Boat (River):** A river patrol boat allows a nation to treat a river as if it were a railroad for purposes of tracing supply paths and using it for strategic rail movement. A river boat may move only along a river. A River Patrol Boat is produced at a factory and can then be placed in any zone within a supply path of that factory.

Unit	Attack	Defense	Move	Cost
River Patrol Boat	5 (see notes)	5 (see notes)	1 (River only)	1

**(a) Combat:** A river patrol boat has no combat value. It cannot combat move, attack, defend or be taken as a casualty – except as noted below.

**(b) Elimination:** A river patrol boat is immediately eliminated if it is alone in a zone with enemy land units, or if it is the only viable target of an air attack. Two river patrol boats in the same river and in the same territory can attack each other with an Attack/Defense of 5 each.

**(c) River Border:** River boats on a river that is the border between two nations (as occurs between Amur and two Manchurian zones) act as if they are in the zone of their nation and are never eliminated unless an enemy owns both sides of the border. A river boat pairs 1:1 with attacking land units to negate the (-1) attacker penalty (for the river border).

**Availability:** Always available.





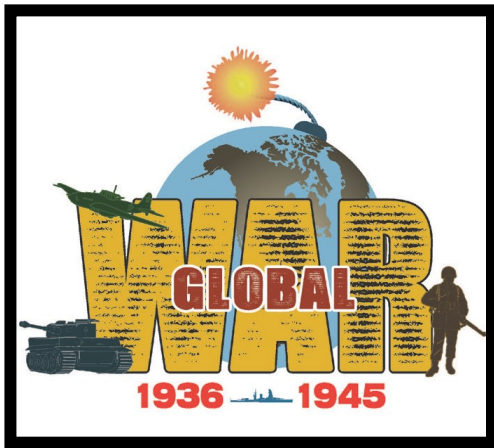
## 3.0 SET UPS

### Place units in the following land zones:

- 1 Brazilian River Patrol Boat in Amazonas
- 1 Polish River Patrol Boat in Western Poland
- 1 Romanian River Patrol Boat in Romania
- 1 Japanese River Patrol Boat on the Amur-Northern Manchuria River border.
- 1 Soviet River Patrol Boat on the Amur-Eastern Manchuria River border.
- 1 British Monitor in SZ 25.





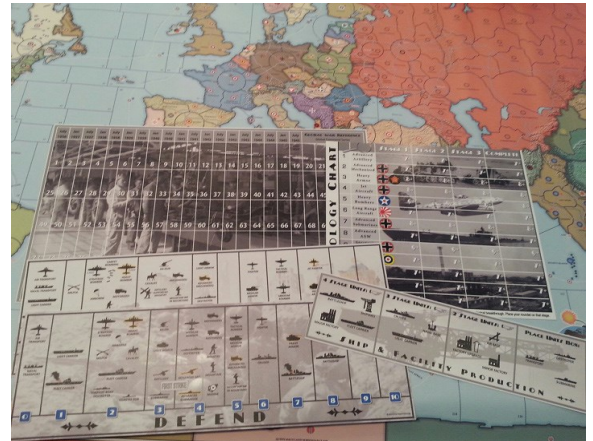
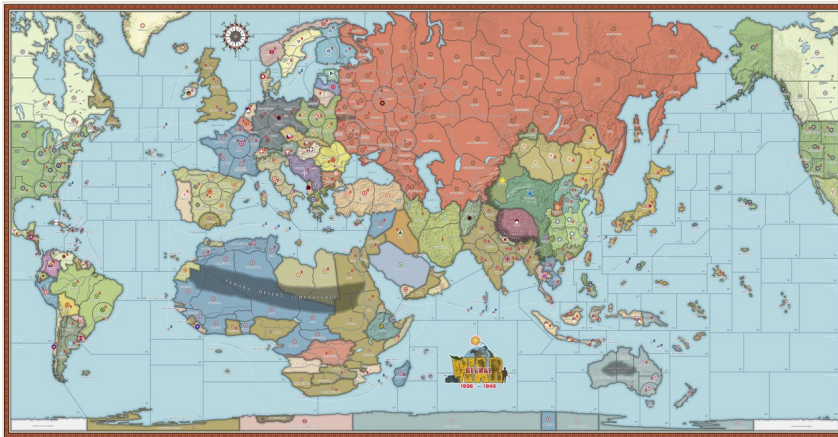


# Global War 1936-1945 - The Ultimate War Game

Welcome to the Global War game family. Global War is a strategic level war game - one of the most heavily supported and expanded games on the market. Visit our website to see our full line of games, expansions, markers, units and other accessories.

You can find Global War 1936-1945 [here](#).

You can view our Global War expansion sets [here](#).



You can view more Global War expansion sets [here](#).

