

CHAR 2C

SUPER HEAVY TANK

A GLOBAL WAR 3D PRINTED EXPANSION SET



HistoricalBoardGaming.com

“Global Command Series”
Char 2C (FCM 2C)
Super Heavy Tank French Set

A Global War 2nd Edition 3d Printed Expansion
© Historical Board Gaming

Overview

We are excited to present the fourth 3D printed series featuring the Char 2C Heavy tank. The rules for the 3D printed sets are identified in Global War 2nd edition as “TDP” sets, followed by a designating letter (A,B,C) etc. for reference. This set is TDPD2 – Our original set contained an L.521 Seaplane that is now sold separately.

The rules are written for Global War -2nd edition, yet they are compatible with Global War 1st edition and Axis & Allies 1940. Slight modifications for use with Axis & Allies 1940 are included in Appendix D.

Set Contents

Base Set

Char 2C (x2) 3d Printed in color Blue
Rule Set (x1)



The enormous Char 2C (FCM 2C) was a French, super-heavy tank. The vehicle was developed in the later years of World War I but never saw combat. At 69 tons, this was by far the heaviest tank of its time and remains to date the largest tank ever fielded. The Char 2C had a 75mm main gun and four 8mm machine guns for infantry protection. This slow vehicle was obsolete by the time World War II began. A total of ten tanks were built; thus, this Char 2C would represent an expanded production and upgraded version that would be competitive at the start of World War II.

Unit	Attack	Defense	Move	Cost
Char 2C	5	5	1	5

Availability: July, 1921

No Blitz: The Char 2C may not Blitz.

Pairing: The Char 2C pairs with infantry to give them a +1 attack value on a 1:1 basis.

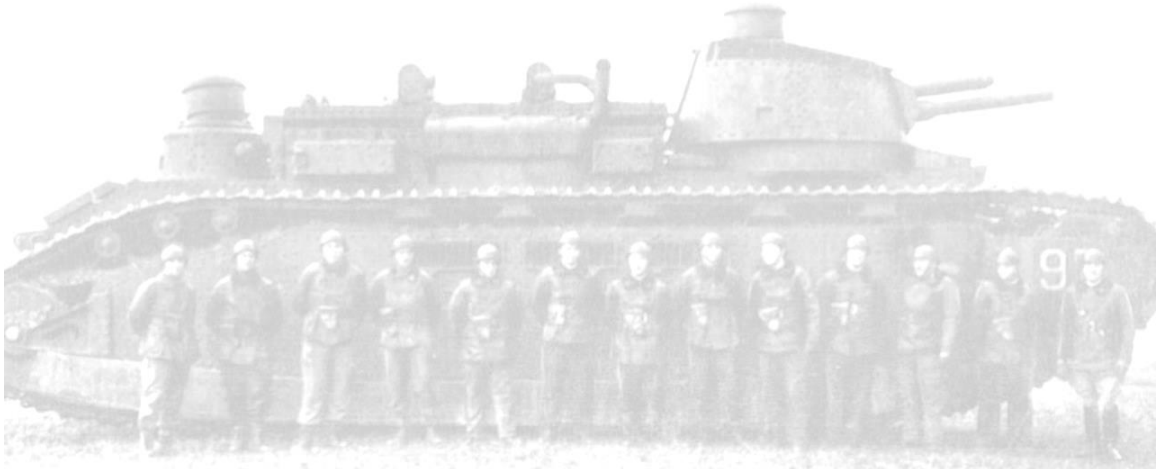
APPENDIX c: AXIS & ALLIES 1940 CHANGES

Unit	Attack	Defense	Move	Cost
Char 2C	3	2	1	5

Availability: Turn 2 of 1921

No Blitz: The Char 2C may not Blitz.

Pairing: The Char 2C pairs with infantry to give them a +1 attack value on a 1:1 basis.



Further information on the Char2C [HERE](#)

Additional like pieces in this set can be purchased at [Historical Board Gaming](#).

If you have and corrections to this document or ideas to make it a better set please email us at info@historicalboardgaming.com

